



IDC5 software update

OHW 15.0.0

TEXA

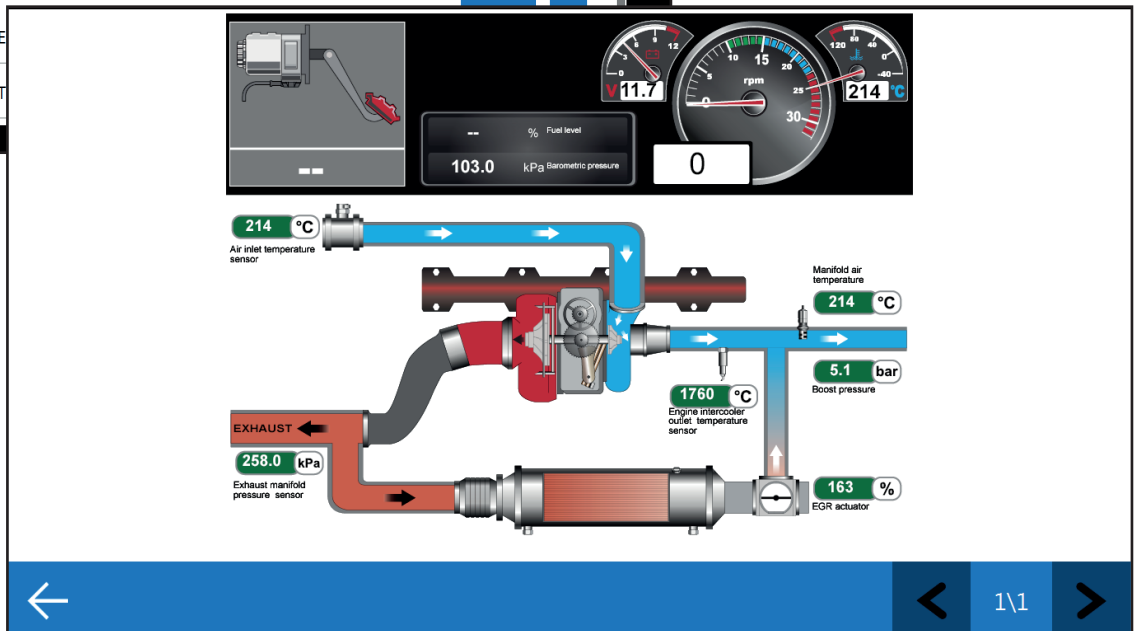
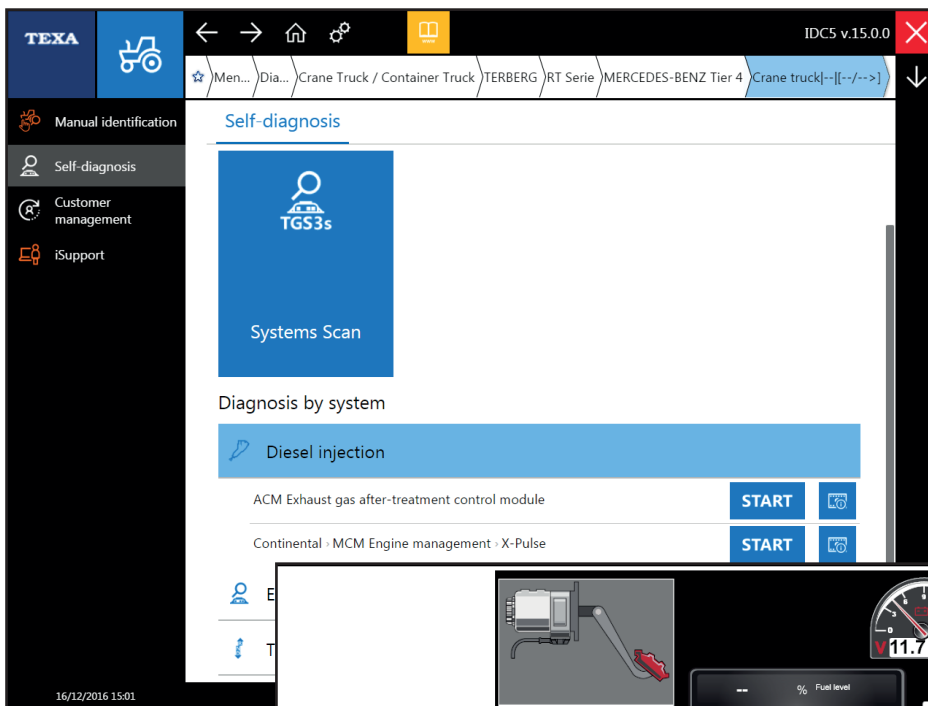
IDC5 OFF-HIGHWAY software update 15

Dear Customer,

the new **IDC5 OFF-HIGHWAY** update 15 is the result of an extended and productive development work that TEXA technicians dedicated to makes that are the most widespread and requested in the AGRI and CONSTRUCTION industry. Starting from this version the software includes new important and advanced diagnostic developments able to support TEXA mechanics with incomparable and continuously evolving equipment. The update represents an essential turning point as it introduces the new IDC5 software, the last evolution of TEXA's famous software dedicated to multi-brand diagnosis, for the OFF-HIGHWAY environment. It is another step forward that will tangibly help repairers during their

demanding daily work. Thanks to an important rewriting of the code, the speed has been increased further, guaranteeing a much quicker access to the communication with the control units. The design of IDC5 was studied simplifying and making all the steps needed for the operations related to maintenance and repairs more intuitive. Furthermore, all the diagnosis pages were rethought in order to provide mechanics with a complete display of the most relevant information.

Furthermore, IDC5 OFF-HIGHWAY 15 is compatible with the very new AXONE Nemo, the flagship product among TEXA's diagnostic tools.



Main features of the new IDC5 software



TGS3S Global system scan

TGS3s is the extraordinary automatic scan of all the electronic vehicles installed in a vehicle that can be diagnosed*, incredibly fast entering in diagnosis and automatically recognising the control units. At the end of the scan, it instantaneously displays all the errors in the vehicle, the error codes, the related descriptions and it allows you to read them and clear them with one simple click. From the error screen you can immediately start a self-diagnostic test on the system selected.

*The TGS3s scan may not be available on older vehicles, since the control units on these vehicles may not support this innovative function.



Automatic Vehicle Search

The Vehicle Search function identifies the model you are working on precisely and quickly. The search is intuitive and immediate and is carried out in these ways:

Engine Code Search: in this case, the vehicle is identified simply entering the engine code.

License Plate Search: it allows you to search and recall the vehicles stored in the Customer Management archive of IDC5 entering the complete or partial license plate number.

Text Search: this option allows you to identify the vehicle involved entering information such as the model name, the number of Kw or HP.

Furthermore, the Vehicle Search function allows you to launch a targeted vehicle scan directly from the selection menu, through the button located beside the make.



Vehicle Check-Up

The Vehicle Check-Up function offers the possibility, on many models of the main makes, to diagnose all the control units with only one operation, without having to examine each single system. In fact, one of the peculiarities of the world of industrial vehicles is to have, on the same vehicle, a high number of electronic systems and often different brand control units may that require customised diagnoses. Vehicle Check-Up satisfies the operating needs of modern electro-mechanical technicians as it allows complete control of the vehicle's electronic system.



DASHBOARD

Among the exclusive functions available in the IDC5 operating software, there is the DASHBOARD which offers the possibility to view the vehicle's engineering parameters, associated with an intuitive and captivating diagram that reproduces a dashboard of an industrial vehicle, the mechanical components and the system's operating logic.

AXONE Nemo

TEXA's latest new product in the diagnostic display field is AXONE Nemo, a powerful tablet designed to guarantee an optimal use for mechanics both inside and outside the workshop. AXONE Nemo allows you to carry out all the diagnostic operations at a very high speed; it is very solid and capable of resisting to strong shocks, including falling in water. In addition to all this, it can float. It has exceptional equipment that puts it at the top of the diagnostic tools and guarantees technicians the possibility to work at the highest levels for many years. Its standard equipment includes, among the others, a 12" capacitive screen with a resolution of 2160x1440, an Intel® Quad Core N3160 processor, an 8 Giga RAM and 250 GB SSD, dual-band Wi-Fi, Bluetooth® 4.0 Low Energy, two 5 megapixel cameras. Another exclusive feature of AXONE Nemo is the possibility to install interchangeable magnetic modules (USB 3.0, Thermographic, Ethernet Broad R/DoIP

LAN) capable of expanding its potentials and the measuring and control resources, in order to keep it always ready for a possible future evolution.



Main new diagnostic features

Below is a list that examines some of the new features available starting from this OFF-HIGHWAY version, dedicated to the most important makes on the market divided into the categories AGRICULTURAL VEHICLES, CONSTRUCTION, CRANES/CONTAINER TRUCKS, INDUSTRIAL ENGINES:

Agricultural vehicles:

CLAAS:

- Shredder Series Jaguar: the Diesel Injection diagnosis has been added for the MAN V12 engine (Master and Slave control units). (*)

DIECI:

- Telehandlers Agri Max, Agri Plus and Agri Tech: the Denoxtronic 2 and EDC 7UC31 Diesel Injection diagnosis has been added. (*)

JCB:

- Tractor Series Fastrac: the ABS, Transmission and Gateway diagnosis has been added.
- Telehandler Series 500: Tier 4 Delphi DCM 3.3+ Diesel Injection diagnosis. (*)

JOHN DEERE:

- Tractors Series 6R: the calibration of the PowrQuad/ AutoQuad and IVT transmissions has been added.

- Tractors Series 7R: the brake calibration has been added.
- Tractors Series 8R (M.Y. 2011): the calibration of the rear linkage, front axle, A/C and brake has been added.
- Tractors Series 6J and 7J: Vehicle Check-Up; Diesel Injection; PTQ Transmission; Rear linkage; Cabin module; Armrest. (*)
- Combine Harvester Series STS: Vehicle Check-Up and Diesel Injection. (*)

KRONE:

- Shredder Series Big-X: the Diesel Injection diagnosis has been added for the MAN V12 engine (Master and Slave control units). (*)

Construction:

BOBCAT:

- Excavator Series E and Skid-Steer Loaders Series S: Complete Vehicle Diagnosis. (*)

DOOSAN:

- Loader Series DL: ErgoPower EST 37 ZF Transmission and Tier 3 Scania EMS Diesel Injection.
- Dumper Series DA: Scania EMS Diesel injection.
- Excavator Series DX: Cummins and Scania EMS Diesel injection.
- Loader Series DL: EMS Scania Tier 4 and Tier 4 final Scania EMS Diesel Injection. (*)

JCB:

- Loader Series 400, Telehandler Series 500, Loader Series TM, Backhoes Series CX and Compactor Series VM: the Tier 4 Delphi DCM 3.3+ Diesel Injection diagnosis has been added.

LIEBHERR:

- Excavator A910 Compact: Diesel Injection for the Tier 4/Tier 3B Deutz engine.

LINK-BELT:

- Series X2: Tier 3 Isuzu Diesel Injection diagnosis. (*)
- Series X3 and X4: Tier 4 Isuzu Diesel Injection diagnosis. (*)

SANDVIK:

- Loaders: Tier 4 Volvo Penta Diesel Injection.
- Dumper: Allison transmission and Tier 4 Volvo Penta Diesel Injection.

TAKEUCHI:

- Skid-steer loaders: Kubota Diesel Injection.

TIGERCAT:

- Series LH, LX e TC: Tier 4 FPT Diesel Injection diagnosis and ADM2 Engine Vehicle Control. (*)

Industrial Engines:

CUMMIN: Diesel Injection for QSB engines.

VM Motori: Tier 3 and Tier 4. Diesel Injection. (*)

ISUZU: Diesel Injection for Tier 2/3 4 and 6 cylinder engines. (*)

FPT: EDC 17CV41 Diesel Injection. (*)

Cranes/Container TRUCKS:

- New make TEREX/DEMAG.

- TADANO-FAUN, TEREX, LIEBHERR and GROVE: the Diesel Injection diagnosis has been added for Tier 4 MTU. (*)

- TADANO-FAUN: Series ATF Mercedes-Benz 4 cylinder Crane Engine Management.

- TERBERG: Series RT and YT, the EST 37 ZF Transmission and Tier 4 Mercedes-Benz Diesel Injection has been added.

- TEREX TRUCK, GROVE, LIEBHERR E TADANO FAUN: simplification of the selections with automatic vehicle detection. (*)

GROVE: the Series RT with a Cummins engine has been added. (*)

DASHBOARDS:

- Tier 4 Delphi DCM 3.3+ JCG Diesel injection

- Master and Slave EDC 7C32 EDC 7C32 Diesel Injection. (*)

(*) Released in the 14.1.0 continuous update.

END OF THE COMPATIBILITY OF TEXA DIAGNOSTIC SOFTWARE PROGRAMS WITH MICROSOFT WINDOWS XP AND WINDOWS VISTA OPERATING SYSTEMS

Starting from June 2017, TEXA's diagnostic software programs can no longer be installed in the following operating systems: Windows XP, Windows Vista. In order to be able to continue using the extraordinary diagnostic functions guaranteed by the IDC5 software, you must have a PC with an updated operating system.

The operating systems that will continue to be supported by TEXA's diagnostic software programs are the following: Windows 7 sp1 32 bit, Windows 7 sp1 64 bit, Windows 8 32 bit, Windows 8 64 bit, Windows 8.1 32 bit, Windows 8.1 64 bit, Windows 10 32 bit, Windows 10 64 bit.

For further details on these functions and on their applicability to vehicles, visit:

www.texa.com/coverage



Extended coverage of makes - Version 15

AGRI

BUHLER VERSATILE
 CARRARO
 CASE IH
 CATERPILLAR
 CHALLENGER
 CLAAS
 DEUTZ - FAHR
 DIECI
 ENERGREEN
 FARESIN
 FENDT
 FRANZ KLEINE
 HURLIMANN
 JCB
 JLG
 JOHN DEERE
 KAMAZ
 KRONE
 KUBOTA
 LAMBORGHINI
 LANDINI
 LAVERDA
 LINDNER
 MAC DON
 MANITOU
 MASSEY FERGUSON
 McCORMICK
 MERLO
 NEW HOLLAND
 RENAULT AGRICULTURE
 ROPA
 SAME
 STEYR
 URSUS
 VALTRA

CONSTRUCTION

ASTRA
 BELL
 BOBCAT
 CARRARO
 CASE
 CATERPILLAR
 DOOSAN
 FIAT-KOBELCO
 HAMM
 HITACHI (Fiat-Hitachi)
 HYUNDAI
 JCB
 JOHN DEERE CE
 KOBELCO
 KOMATSU
 KRAMER
 KUBOTA
 LIEBHERR
 LINK-BELT
 MERLO
 NEW HOLLAND
 O&K
 PERLINI
 PETTIBONE
 RANDON
 SANDVIK
 TAKEUCHI
 TEREX
 TIGERCAT
 VOLVO CE
 XTREME


CRANE TRUCK/CONTAINER TRUCK


COMETTO
 CVS FERRARI
 GROVE
 HYSTER
 HYUNDAI
 KALMAR
 LIEBHERR
 LINDE
 OTO
 TADANO FAUN
 TERBERG
 TEREX
 TEREX/DEMAG

INDUSTRIAL ENGINES

CATERPILLAR
 CUMMINS
 DETROIT
 DEUTZ
 FPT (IVECO MOTORS)
 JOHN DEERE
 KUBOTA
 MERCEDES-BENZ
 MTU
 MWM
 PERKINS
 SCANIA
 SISU
 VM MOTORI
 VOLVO PENTA

LEGEND



 Brands that offer updates in this version

 Brands that do not offer updates in this version

This document is strictly confidential. All copying, in part or in whole, is strictly forbidden without the prior authorisation of TEXA S.p.A. Future specifications, descriptions and appearances may vary with respect to this brochure. TEXA S.p.A. reserves the right to modify its products without prior notice.

WARNING

The trademarks and logos of vehicle manufacturers in this document have been used exclusively for information purposes and are used to clarify the compatibility of TEXA products with the models of vehicles identified by the trademarks and logos. Because TEXA products and software are subject to continuous developments and updates, upon reading this document they may not be able to carry out the DIAGNOSTICS of all the models and electronic systems of each vehicle manufacturer mentioned within this document. References to the makes, models and electronic systems within this document must therefore be considered purely indicative and TEXA recommends to always check the list of the "Systems that can be diagnosed" of the product and/or software at TEXA authorized retailers before any purchase. **The images and the vehicle outlines within this document have been included for the sole purpose of making it easier to identify the vehicle category (car, truck, motorbike, etc.) for which the TEXA product and/or software is intended.** The data, descriptions and illustrations may change compared to those described in this document. TEXA S.p.A. reserves the right to make changes to its products without prior notice.

		
+39 0422 791311	texa.com	info.it@texa.com
		
facebook.com/texacom	twitter.com/texacom	youtube.com/texacom
		
instagram.com/texacom	linkedin.com/company/texa	plus.google.com/+TEXAcom



COMPANY WITH
 QUALITY SYSTEM
 CERTIFIED BY DNV GL
 = ISO 9001 =

The BLUETOOTH brand is the property of Bluetooth SIG, Inc., U.S.A., and is used by TEXA S.p.A. under license.

Copyright TEXA S.p.A. - 01/2017 - Inglese

MADE IN ITALY 

